

# LANSwitch

5-port Ethernet Switch on PC/104plus

The Advanced Micro Peripherals LANSwitch is an industry-standard multiport Ethernet Switch for use in harsh environments. It is produced on a rugged PC/104plus form factor.



The LANSwitch features a five-port 10/100Mbit switch with four external cable connections plus a built-in PCI Ethernet Controller.

The on-board Ethernet controller provides an additional standard Ethernet port for the PC/104plus host CPU that connects directly to one of the ports of the Ethernet switch.

Five

10/100Mbit Ports

including a

Built-in PCI

Ethernet

Controller

# LANSwitch

5-port Ethernet Switch on PC/104plus



Unlike an Ethernet hub which broadcasts all messages out of every port, the LANSwitch automatically detects and records where each Ethernet device is located and routes data direct to the appropriate port. This direct wire-speed switching eliminates data collision, significantly reduces unnecessary network traffic and can result in deterministic communications with attached Ethernet devices.



## Applications

- Multiple IP Camera Surveillance
- Transportation
- Heterogeneous Intra-Platform Network
- Intelligent Sensors
- Distributed and Cluster Computing
- Real-time Networking Systems

Network Traffic

Minimized.

Data collision

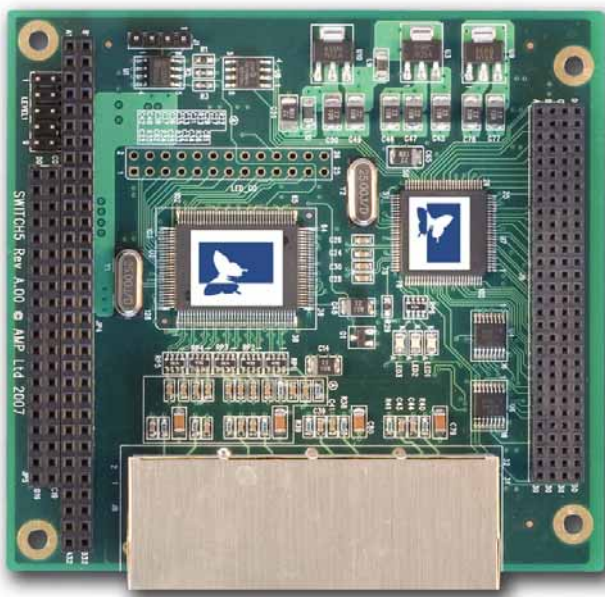
eliminated.



# LANSwitch

5-port Ethernet Switch on PC/104plus

The LANSwitch is ideal for networking intelligent sensors and multiple processing nodes as part of a tightly-integrated embedded system.



**LANSwitch**

Ideal for  
networking  
multiple  
intelligent  
sensors

## Features

5-port 10/100 Mbit Ethernet Switching

Compliant with IEEE802.3/802.3u auto-negotiation

Integral PCI 10/100Mbit Ethernet Controller

Compact PC/104plus Card

Single +5V operation

**Ethernet Controller**

10/100Mbit Ethernet Controller on PCI bus connected to internal port of switch

**PC/104plus bus**

Compliant with PCI Rev 2.2  
132MBytes/sec bandwidth at 33.33MHz bus speed  
PCI Bus Master/Slave

**Host System Requirement**

PC/104plus bus with one spare REQ/GNT  
+5V or +3.3V signalling

**Ethernet Switch**

4 External Ports (to RJ45), 1 Internal Port  
4 RJ45 sockets  
10/100 MBit wire-speed switching  
IEEE 802.3u auto-negotiation  
Half/full duplex operation  
Power saving modes

**Miscellaneous**

Single +5V power at less than 700mA  
Operating Temp 0°C to 60°C (Std)  
or -40°C to +85°C (Ext)

**Software**

Ethernet Controller	Directly supported by all major OS including Windows/Linux
Ethernet Switch	No external software required

**Related products**

Tiny886ULP	Ultra Low Power PC/104plus Crusoe Computer
Tiny-C3	
Tiny-GX	

**Ordering Information**

LANSwitch-1/4S	LANSwitch (0°C to 60°C)
LANSwitch-1/4S-Ext	LANSwitch (-40°C to +85°C)